

CORE CAPABILITIES

- New Product / Packaging Development
- Manufacturing Process Development & Improvement
- Testing Method Development & Validation Support
- Technology Transfer of Developed Products
- Machinery Show Room & Machine / Facility Leasing
- Pilot Scale Trial Batches for Market Presentation / Testing
- Technical Support for Products Registration & Marketing
- Contract Stability Storage Facility for Shelf-Life Estimation
- Equipment Set up & Operation Training

CLIENTS

- Human & Vet Pharmaceuticals
- Nutraceuticals & Dietary Supplements
- Dairy & Functional Foods
- Cosmetics & Toiletries
- Contract Research Organisations
- Universities and Educational Institutions



NEW ZEALAND

78 Ascot Road, Mangere, Auckland 2022, New Zealand

M: +64 211 404 234 **P:** +64 9 278 9496

E: info@scitechinnovate.co.nz

www.biotecsolutions.co.nz

AUSTRALIA

Unit 6, 167 Magowar Rd, Girraween, NSW 2145

M: +61 431 424 070 **P:** +61 2 9896 0660

E: info@biotecsolutions.com.au

www.biotecsolutions.com.au

STI



SCI-TECH
INNOVATIONS LTD



OBJECTIVES

Research & Development and Structured Innovation is a backbone of any Pharmaceutical, Nutraceutical and Healthcare related companies. Due to the limited resources and scarcity of in-house relevant technical staff, it becomes very difficult for both small and medium scale branded products marketer, manufacturer, exporter and contract manufacturers, packers to maintain an in-house dedicated formulation development facility. To support our customers, we further strengthen and widen Biotec group services capabilities, by releasing one more prominent feather in our services cap as a Research & Development Innovation wing through SCI-TECH INNOVATIONS LTD. Biotec group with over 25+ years of extensive experience in technology and service and 100+ years of combined team experience in the product development in pharmaceutical / nutraceutical industries introducing a purposely built R&D and Innovation Pilot Plant for our customers to reach their marketing goals.

OUR MISSION

CONCEPT TO MARKET

OUR VISION

To be a trusted leader and a **ONE STOP SHOP** for product development, technical, engineering, quality services & training to various Pharmaceutical / Nutraceutical / Functional foods and allied industries in New Zealand, Australia, & Fiji enhancing their business needs for the competitive future.

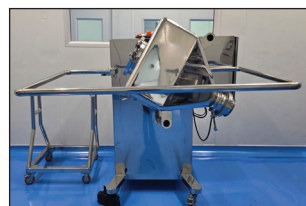
LOCATION & PILOT PLANT DESCRIPTION

- About 5 kms away from Auckland International & Domestic Airport
- 450 sq mt NPD Pilot Plant including 50 sq mt materials storage warehouse
- 150 sq mt Benchtop Laboratory including meeting and training rooms
- On site accessibility for Hitech RM and NPD products testing facility

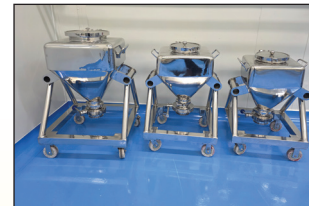


R&D / PILOT SCALE CAPABILITIES

POWDER BLENDING AND PROCESSING



CONTA / BIN BLENDER



ADDITIONAL BINS



CONE MILL



VIBRO-SIFTER

WET AND DRY GRANULATION



HIGH SHEAR MIXER GRANULATOR



EXTRUDER-SPHERONISER



ROLLER COMPACTOR - DRY GRANULATOR



FLUID BED PROCESSOR

R&D / PILOT SCALE CAPABILITIES

TABLETTEING & COATING



TABLETTEING MACHINE



AUTOCOATER 18" FOR TABLETS & MINI TABLETS

HARD SHELL CAPSULATION



AUTOMATIC CAPSULE FILLING MACHINE

Powder in Capsule
Tablet in Capsule
Pellet in Capsule
Capsule in Capsule
Liquid in Capsule

SEMI AUTOMATIC CAPSULE BAND SEALING MACHINE

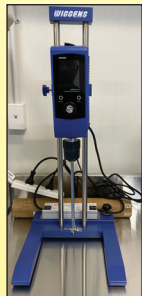


SOFT GEL

PILOT SCALE
SOFTGEL PLANT
WITH FILLING
& AIR DRYING
CAPABILITY



SOLUTIONS/SUSPENSIONS/CREAMS/SUPPOSITORIES



OVERHEAD
STIRRER



TURBO-EMULSIFIER



SUPPOSITORY FILLING
& SEALING MACHINE

R&D / PILOT SCALE CAPABILITIES

BOTTLE PACKING



4 HEAD COUNTER



HDPE Bottles



WRAP AROUND LABELLER

BLISTER PACKING



ALU / PVC

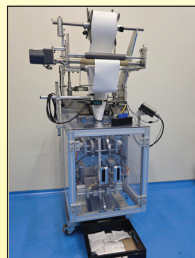


ALU / ALU

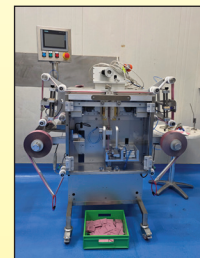
SEMI-AUTOMATIC BLISTER FORM,
SEAL, CUT MACHINE



FORM, FILL, SEAL PACKING MACHINE



SINGLE LANE 3 SIDE SACHET
FILLER



SINGLE LANE 4 SIDE SACHET
FILLER



SINGLE LANE STICK-PACK FILLER

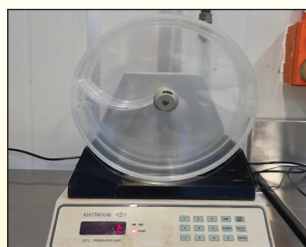
QUALITY CONTROL CAPABILITIES



MOISTURE CONTENT



DISINTEGRATION



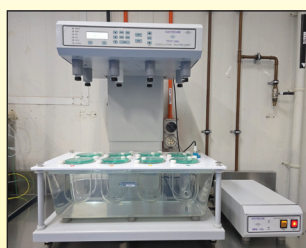
FRIABILITY



HARDNESS



SACHET / BLISTER LEAK



DISSOLUTION TESTER

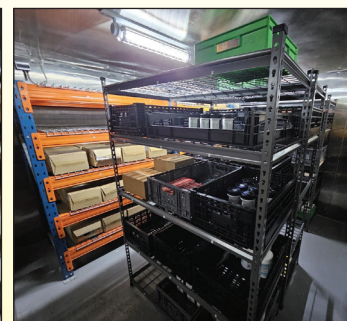
- Untapped Bulk Density
- Tapped Bulk Density
- Angle of Repose
- Loss on Drying (LoD)
- Water by KF (Karl Fisher)
- Disintegration Time
- Dissolution Testing
- Friability
- Tablet Hardness
- Particle size distribution by Sieve analysis
- pH determination
- High Performance Liquid Chromatography (HPLC)
- Ultra-Performance Liquid Chromatography (UPLC)
- Spectrometry (UV/Visible & FTIR)
- Gas Chromatography
- Microbial Testing



CONTRACT STABILITY SAMPLES STORAGE FACILITY



STANDALONE CHAMBERS

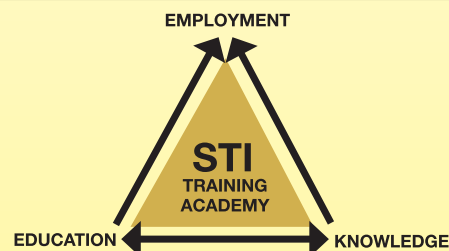


WALK-IN CHAMBERS

📍 AUCKLAND, CHRISTCHURCH, SYDNEY, MELBOURNE, BRISBANE

- Multiple Sites purposely built stability samples storage facility for shelf-life estimation
- Over 10 different climatic conditioned (Temperature and %RH) stability study chambers

SCI-TECH TRAINING CENTRE



- A Bridge between education: knowledge: employment
- Technical (Testing / Quality / Compliance / NPD)
- Operation (Equipment / Process / Engineering)
- Regulatory (Listing / Registration / Label Presentation)